



CenCalHEALTH[®]
Local. Quality. Healthcare.

CalAIM CS & ECM Engagement Session

September 29, 2022



Meeting Topics

- Welcome & Engagement Purpose
- Population of Focus

Blanca Zuniga, Associate Director, Care Management

- Incentive Payment Program: Status and Next Steps
Jordan Turetsky, MPH, Provider Network Officer
- Open Chat



ECM Population of Focus Timeline

Populations of Focus (POFs)

Effective Dates

PHASE ONE

1. Individuals & Families Experiencing Homelessness
2. High Utilizer Adults
3. Adults with Severe Mental Illness (SMI) / Substance Use Disorder (SUD)

7/1/2022

PHASE TWO

5. Adults Living in the Community who Are at Risk for LTC Institutionalization
6. Nursing Home Residents Transitioning to the Community

1/1/2023

PHASE THREE

7. Children and Youth
4. individuals Transitioning from Incarceration (adults/youth)

7/1/2023

ECM Eligibility Criteria: Adults Living in the Community who Are at Risk for LTC Institutionalization



(1) Adults living in the community who meet the Skilled Nursing Facility (SNF) Level of Care criteria; OR who require lower-acuity skilled nursing, such as time-limited and/or intermittent medical and nursing services, support, and/or equipment for prevention, diagnosis, or treatment of acute illness or injury;
AND



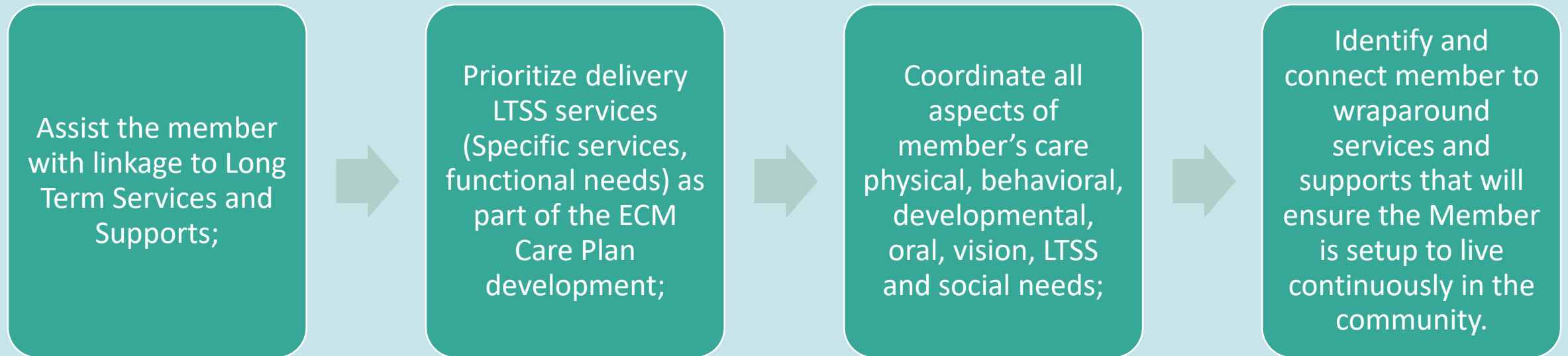
(2) are actively experiencing at least one complex social or environmental factor influencing their health (including, but not limited to, needing assistance with activities of daily living (ADLs), communication difficulties, access to food, access to stable housing, living alone, the need for conservatorship or guided decision-making, poor or inadequate caregiving which may appear as a lack of safety monitoring),AND



(3) can reside continuously in the community with wraparound supports (i.e., some individuals may not be eligible because they have high-acuity needs or conditions that are not suitable for home-based care due to safety or other concerns).

ECM Services: Adult Living in the Community who are at Risk for LTC Institutionalization

Criteria: Nursing Home Residents Transitioning to the Community



ECM Eligibility Criteria: Nursing Home Residents Transitioning to the Community



Nursing facility residents who are:



- Interested in moving out of the institution;



- Are likely candidates to do so successfully; and



- Able to reside continuously in the community.



Exclusions: Individuals residing in Intermediate Care Facilities (ICF) and subacute care facilities are excluded from this Population of Focus.

ECM Services: Nursing Home Residents Transitioning to the Community

Provide linkage to address all needs of the Member, including coordinating with local housing agencies

Identifying the least restrictive community housing option

Coordinate ongoing medical care that may be needed, and; other community-based services to ensure Member will be able to transition and reside continuously in the community

Partner with those involve with the Member, their family and friends (as requested), legal representative (as applicable), and the interdisciplinary care team, the SNF facility discharge planner, and any other relevant clinical, behavioral health, and social work staff



CenCalHEALTH®
Local. Quality. Healthcare.

Incentive Payment Program *Status and Next Steps*

Jordan Turetsky, MPH
Provider Network Officer



Agenda

- Background: ECM and Community Supports
- Incentive Payment Program: Intent and Allocation
- CenCal Health Incentive Assessment Process
- Provider Feedback
- Next Steps



ECM and Community Supports



Enhanced Care Management (ECM) is a new benefit under CalAIM, available as of July 1 for eligible members.



Community Supports are optional services, not funded by DHCS, which health plans may offer and which seek to improve SDOH.



CenCal Health currently contracts with **three ECM providers** and offers two Community Supports.



CenCal Health seeks to continue **expanding ECM capacity** and will add four additional Community Supports in January 2023.

Incentive Payment Program (IPP)

Intent: Optional funds made available by DHCS to support the implementation and expansion of ECM and Community Supports.



Funds can be used for:

- Infrastructure development
- Staffing
- Operations
- Training
- Other identified community or health plan needs



CenCal Health IPP Application Focus:

- Data sharing and case management
- Member identification and engagement (e.g. homeless members)
- Annual training
- Expansion of ECM and CS capacity

CenCal Health Funding Allocation

- \$19M awarded to CenCal, with payments dependent on progress against stated goals
- \$12.8M received to date

Eligible provider types include:

- Current ECM or CS providers
- Potential ECM or CS providers
- County entities
- CBOs
- Medical and Behavioral Health providers
- Correctional facilities



CenCal Health Incentive Assessment Process

ASSESS

Determine stakeholder needs, including:

- Internal staff
- Providers
- Members
- Community organizations
- Local coalitions

DESIGN

Evaluate assessed needs against incentive parameters, including:

- Funding intent
- Desired outcomes
- Required timeframe
- Limitations or restrictions

IMPLEMENT*

Develop and execute a transparent incentive administration program, including:

- Funding application
- Assessment process
- Funding agreement
- Defined goals and objectives

MONITOR

Monitor incentive program outcomes and effectiveness, including:

- Progress against identified goals
- Member and community impact
- State reporting

**CenCal Health will implement an incentive funding program which is transparent in its goals, funding criteria, and issued awards, and for which regular updates are provided to the CenCal Health Board.*

Provider Feedback

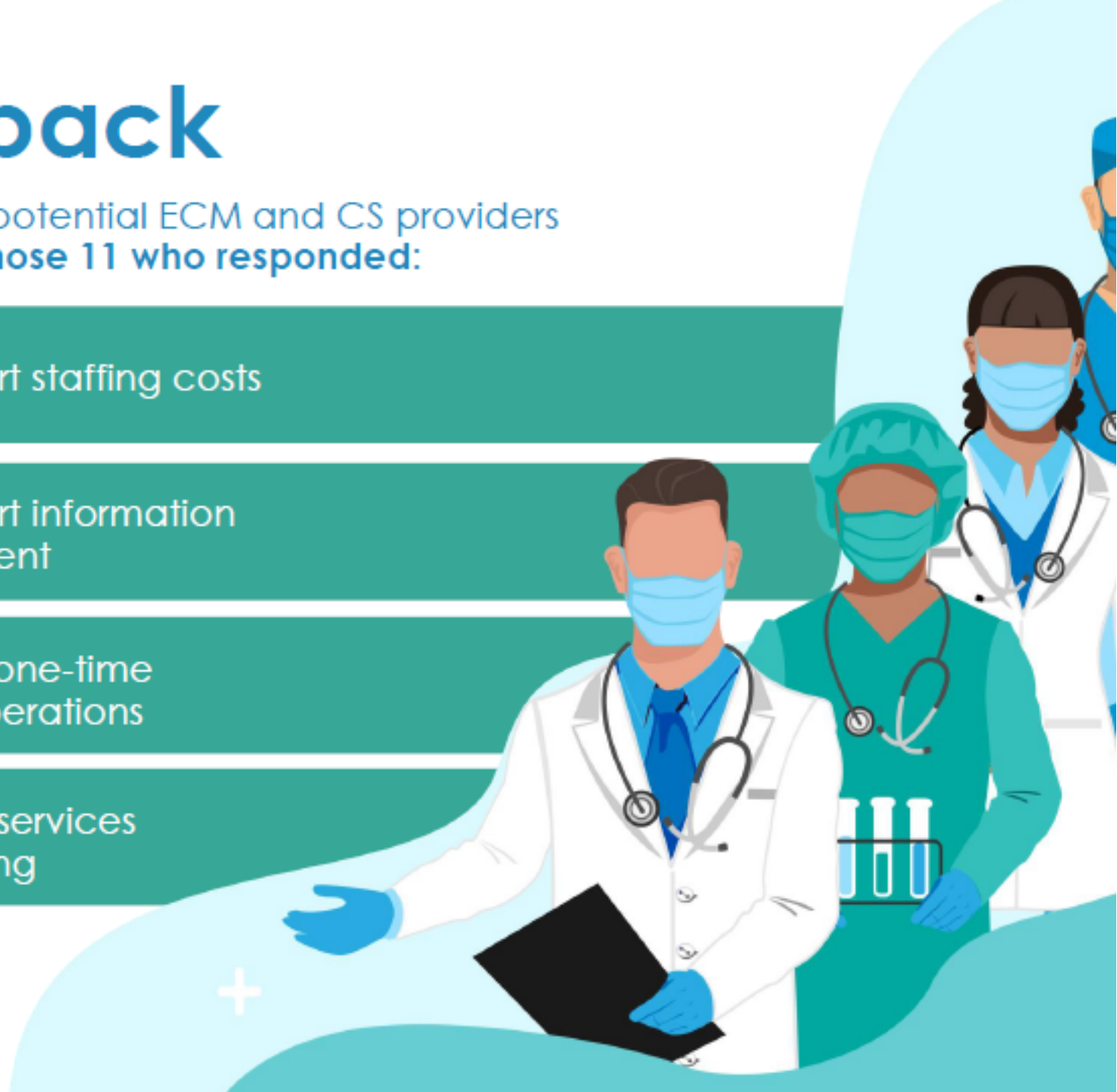
CenCal Health surveyed current and potential ECM and CS providers to understand IPP funding needs. **Of those 11 who responded:**

100% Said funding would support staffing costs

72% Said funding would support information technology or enhancement

64% Said funds would support one-time expenses and ongoing operations

36% Said providing ECM or CS services is dependent on IPP funding



Next Steps



The Incentive Payment Program aligns with CenCal Health's values of Collaboration and Compassionate Service as we work with our providers to enhance the health of our communities.



CenCalHEALTH[®]
Local. Quality. Healthcare.